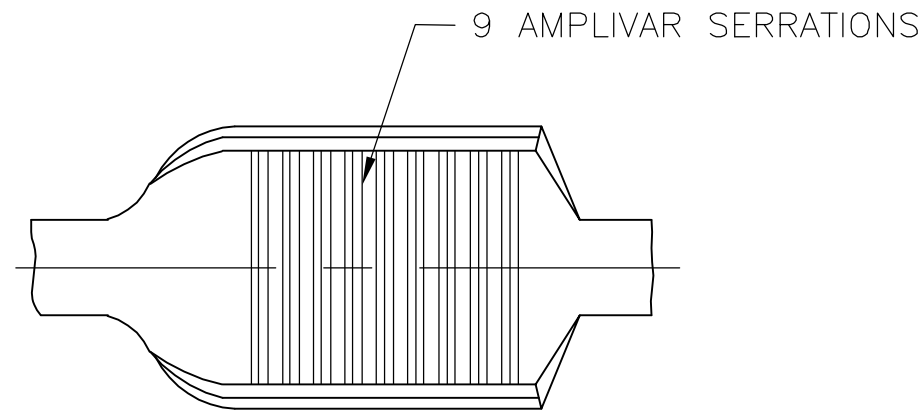
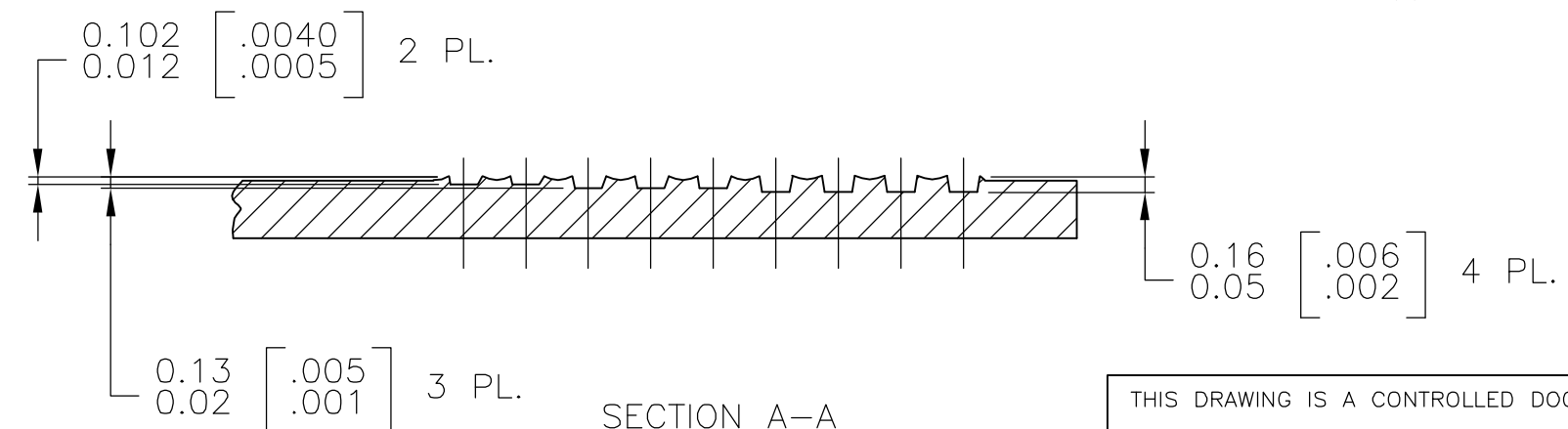
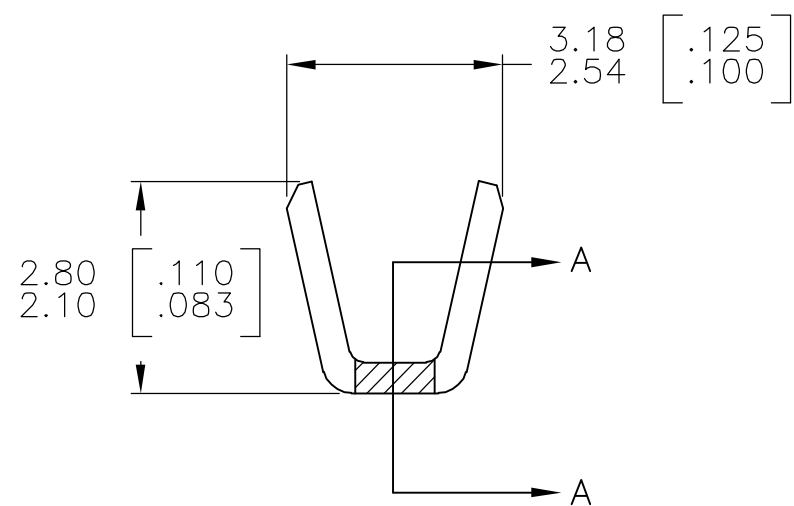
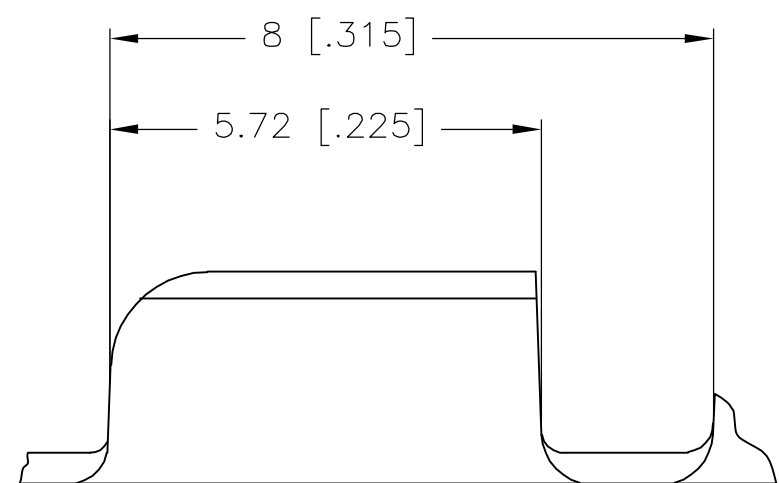


THIS DRAWING IS UNPUBLISHED. RELEASED FOR PUBLICATION
 © COPYRIGHT BY TYCO ELECTRONICS CORPORATION. ALL RIGHTS RESERVED.

LOC	DIST	REVISIONS					
AF	50	P	LTR	DESCRIPTION	DATE	DWN	APVD
			E1	ECR-06-003925 (REDRAWN IN AUTOCAD)	31JAN06	HMR	GDP



1. PRODUCT PROVIDED IN STRIP FORM ON REELS; BREAKS MAY BE PRESENT.
2. DIMENSIONS IN BRACKETS ARE IN INCHES.
3. CRIMP WIDTH: .080 F (AMPLIVAR TYPE)
 CRIMP HEIGHT $(\pm .002) = (\text{TOTAL CMA} + 5320) / 139,200$
 GENERAL APPLICATION GUIDELINES MUST BE FOLLOWED AS SPECIFIED IN CATALOG #82221
 FOR APPLICATOR INFORMATION CALL: 1-800-722-1111
 FOR PRODUCT INFORMATION CALL: 1-800-522-6752



SECTION A-A
 SCALE 20:1

METRIC

62303-2
 PART NO

THIS DRAWING IS A CONTROLLED DOCUMENT.		DWN	RAGHAVENDRA	31JAN06	tyco Tyco Electronics Corporation		
DIMENSIONS: mm [INCHES]		CHK	G.D.PORTA	-	Harrisburg, PA 17105-3608		
TOLERANCES UNLESS OTHERWISE SPECIFIED:		APVD	G.D.PORTA	-	NAME		
0 PLC ± -		PRODUCT SPEC	-	SPLICE, AMPLIVAR			
1 PLC ± -		APPLICATION SPEC	-	400 TO 1500 CMA			
2 PLC ± -		SIZE	114-2003	CAGE CODE	A3 00779	DRAWING NO	C-62303
3 PLC ± 0.38 [.015]		WEIGHT	-	RESTRICTED TO			
4 PLC ± -		CUSTOMER DRAWING		SCALE	10:1	SHEET	1 OF 1
ANGLES ± 1°		MATERIAL		REV			
FINISH		0.41 [.016] BRASS		E1			
TIN PL.							